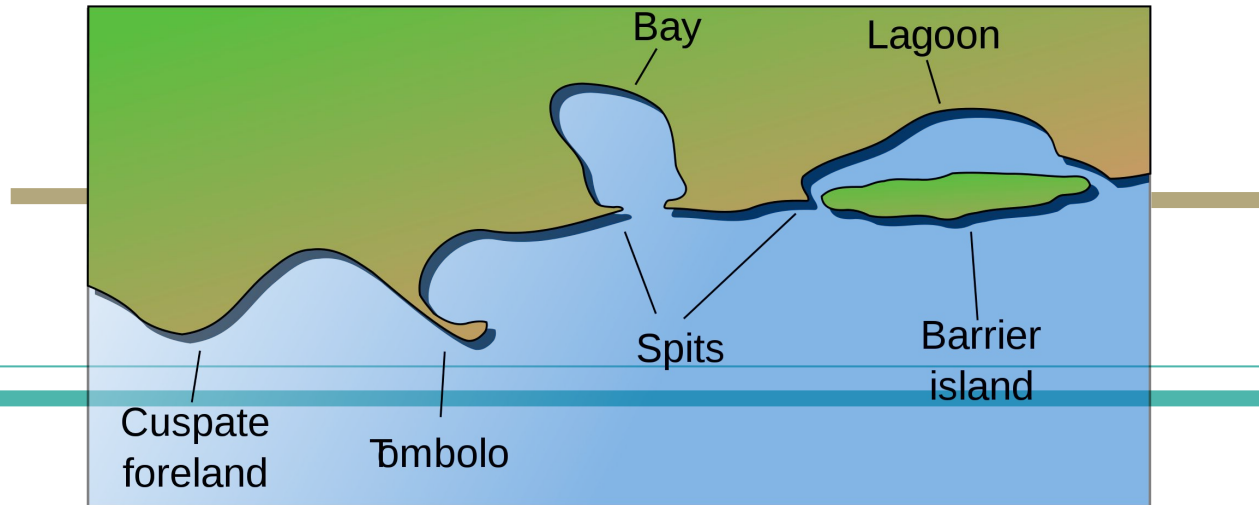


---

---

# Landforms



# Objectives

- Determine criteria for a “just right” definition.
- Identify and define landforms.
- Build on to a partner’s ideas during an academic conversation to create definitions.

# Is this a “just right” definition?

noun. a natural elevation of the earth's surface rising more or less abruptly to a summit, and attaining an altitude greater than that of a hill, usually greater than 2000 feet (610 meters).

noun. a large land mass that is higher than a hill. *Many climbers reach the summit of the mountain.*

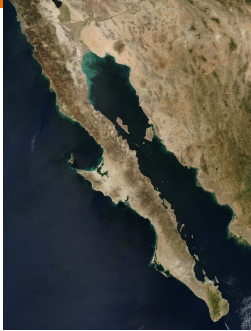
big land in a triangle shape  
tall with trees on it  
you can climb it

# Criteria for a “just right” definition

- not too hard and not too easy - understandable
- make a picture- visualize
- details
- part of speech (noun, verb)
- give an example of how it is used in sentence
- where do you find?

# Define the landform

Yes



No



# peninsula

## Our definition

**noun. water on three sides;  
connects to land on the fourth  
side, could be different bodies of  
water**

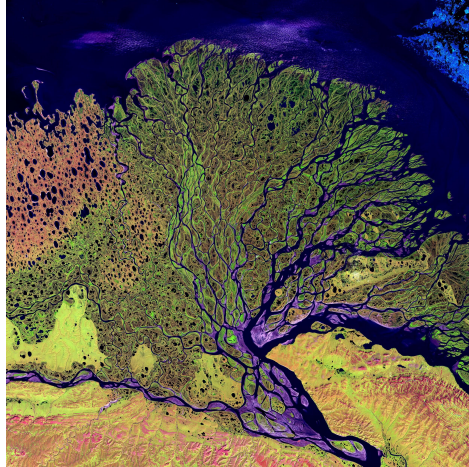
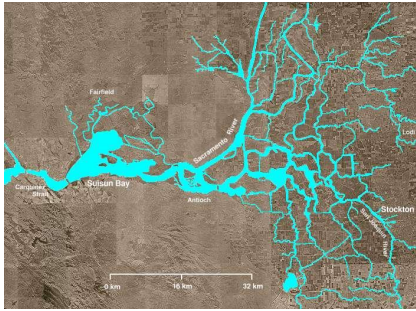
**An example of an peninsula is  
Florida.**

## Dictionary definition

noun. an area of land almost completely surrounded by water except for an isthmus connecting it with the mainland.

# Ask your partner: How do you define this landform?

examples



non-examples



# delta

## Our definition

noun. (looks like roots of a tree or coral), shallow with land, formed by rivers, lots of little streams of water leading to a bigger body of water. *The river delta leads water to the sea.*

## Dictionary definition

noun. a nearly flat plain of alluvial deposit between diverging branches of the mouth of a river, often, though not necessarily, triangular:



# bay---harbor---gulf



## bay

## harbor

## gulf

- a part of a body of water along the shore deep enough for anchoring a ship and so situated with respect to coastal features, whether natural or artificial, as to provide protection from winds, waves, and currents.
- a portion of an ocean or sea partly enclosed by land.
- a body of water forming an indentation of the shoreline, larger than a cove but smaller than a gulf.

Is this a plateau?



That's a plateau!

Is this a reservoir?



That's a reservoir!